



## ACCESS SHEET

Transfer Costs

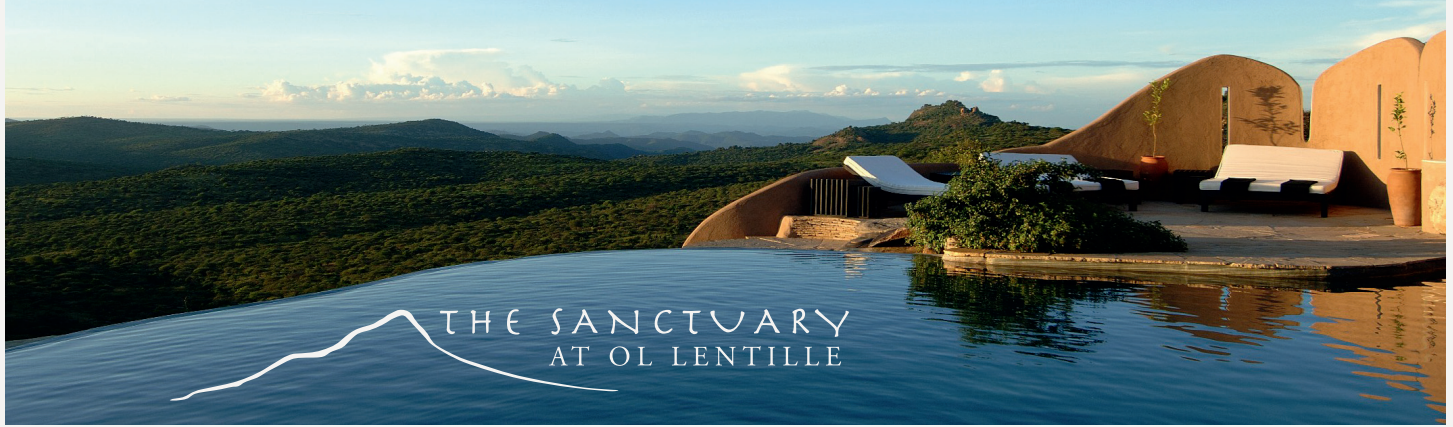


## Get off the beaten track!

It is easy to access and experience our spectacular  
25,000 acre private conservancy in  
Laikipia, Northern Kenya.

YOUR OWN PLACE IN THE AFRICAN WILDERNESS

[reservations@ol-lentille.com](mailto:reservations@ol-lentille.com) ♦ +254 706 975 760 ♦ [www.ol-lentille.com](http://www.ol-lentille.com)



Our remote wilderness is easily accessible. There are numerous easy options:

- Nairobi Wilson airport to Nanyuki by scheduled air service is a 40 minutes flight  
Then a 1.5 hour road transfer to Ol Lentille
- Nairobi Wilson airport to Loisaba by scheduled air service is a 50 minute flight and then a 1.5 hours gentle road transfer to Ol Lentille
- Nairobi Wilson airport to Nanyuki by scheduled air service is 40 minutes  
Then a 20 minutes private charter flight to Ol Lentille
- Nairobi to Ol Lentille driving is between 5-6 hours
- For the ultimate arrival guests can easily arrive by helicopter
- Private charter from Wilson to our private airstrip is 50 minutes then 15 minutes driving

### 2016 SCHEDULED FLIGHT PRICES

Safarilink and Air Kenya have regular flights from Nairobi Wilson to Nanyuki.  
We prefer Safarilink for their more convenient scheduled times.

Daily Safarilink schedule from <b>Nairobi Wilson</b> to <b>Nanyuki</b>	
Departs from Nairobi Wilson at 08:00 and arrives in Nanyuki at 09:50 Departs from Nairobi Wilson at 10:20 and arrives in Nanyuki at 11:00 Departs from Nairobi Wilson at 13:00 and arrives in Nanyuki at 13:40 (high season only)	
Daily Safarilink schedule from <b>Nanyuki</b> to <b>Nairobi Wilson</b>	
Departs from Nanyuki at 12:35 and arrives in Nairobi Wilson at 13:15	
Low Season Rates	Single <b>\$146</b> , Return <b>\$236</b> plus taxes
High Season Rates	Single <b>\$160</b> , Return <b>\$268</b> plus taxes

Daily Safarilink schedule from <b>Nanyuki</b> to <b>Masai Mara</b>	
Departs from Nanyuki at 10:00 and arrives in Masai Mara at 11:00 (high season only)	
High Season Rates only	<b>\$322 pp</b> plus taxes

Prices subject to change by carrier.

Arrival and departure times can vary significantly as they depend on passenger related routing of the aircraft on the day of travel.

YOUR OWN PLACE IN THE AFRICAN WILDERNESS

reservations@ol-lentille.com ♦ +254 706 975 760 ♦ www.ol-lentille.com





## 2016 SCHEDULED FLIGHT PRICES

Safarilink and Air Kenya have regular flights from Nairobi Wilson to Loisaba.  
We prefer Safarilink for their more convenient scheduled times.

### Daily Safarilink schedule from **Nairobi Wilson** to **Loisaba**

Departs from Nairobi Wilson at 08:00 and arrives in Loisaba at 08:55  
Departs from Nairobi Wilson at 10:20 and arrives in Loisaba at 11:45  
Departs from Nairobi Wilson at 13:00 and arrives in Loisaba at 14:25 (high season only)

Low Season Rates	Single <b>\$226</b> , Return <b>\$386</b> plus taxes
High Season Rates	Single <b>\$240</b> , Return <b>\$409</b> plus taxes

### Daily Safarilink schedule from **Loisaba** to **Nairobi Wilson**

Departs from Loisaba at 11:55 and arrives in Nairobi Wilson at 13:15

Prices subject to change by carrier.

Arrival and departure times can vary significantly as they depend on passenger related routing of the aircraft on the day of travel.

## 2016 ROAD TRANSFERS

### Road transfers from **Nanyuki** to **Ol Lentille**

Return transfers from Nanyuki are only **\$400** for the vehicle  
A stunning 1.5 hour drive  
For the same cost we can offer transfers from Loisaba which is 1.5 hour drive from Ol Lentille  
Maximum of six people in a vehicle

YOUR OWN PLACE IN THE AFRICAN WILDERNESS

reservations@ol-lentille.com ♦ +254 706 975 760 ♦ www.ol-lentille.com



## 2016 CHARTER FLIGHT PRICES

Price for the aircraft (not per person) from **Nairobi Wilson** to **Ol Lentille** one way

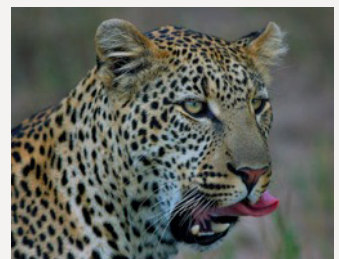
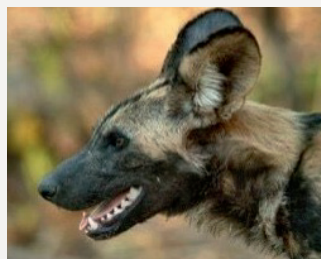
1-3 passenger aircraft	<b>\$1500</b>
4-6 passenger aircraft	<b>\$2000</b>
7-12 passenger aircraft	<b>\$2500</b>

These are for guidance only as it is not possible to have a firm price until we receive a quotation for the charter.  
Prices are for the aircraft (not per person) one way Nairobi Wilson to Ol Lentille:

## 2016 HELICOPTER PRICES

Price for the helicopter (not per person) from **Nairobi Wilson** to **Ol Lentille** one way

5 passenger Eurocopter approximately	\$3300 one way
3 passenger Robinson Raven II approximately	\$1425 one way



YOUR OWN PLACE IN THE AFRICAN WILDERNESS

reservations@ol-lentille.com ♦ +254 706 975 760 ♦ [www.ol-lentille.com](http://www.ol-lentille.com)